



Resource Planning Office

Federal Bureau of Investigation

RPO

Enterprise Processes



Data Informed Analysis



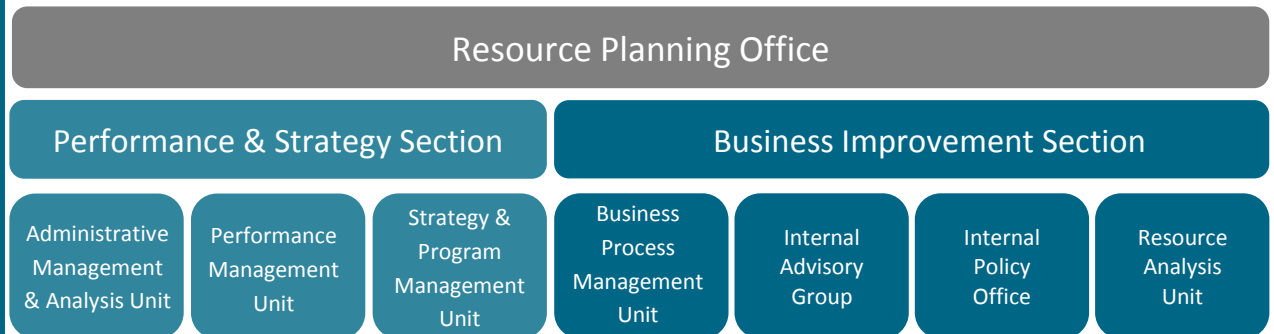
Innovation

WHAT IS THE RESOURCE PLANNING OFFICE (RPO)?

The RPO manages the FBI's \$5+ billion personnel budget and strategic planning processes; crafts internal policy; designs business intelligence tools; automates and re-engineers business processes; and provides project-based consulting services to senior executives. In short, RPO exists to drive innovation and enable efficient and effective FBI business operations, thereby ensuring that investigative personnel have what they need to protect the American People.

WHAT DOES RPO CONSIST OF?

RPO is led by an assistant director and two section chiefs. The division consists of seven units organized into two sections. Each unit, led by a unit chief, has different responsibilities and has a significant role in the operations of the FBI.



WHAT DOES AN RPO ANALYST DO?

RPO analysts have the opportunity to:

- Collaborate with forward-thinking, innovative colleagues
- Lead and support diverse programs and projects
- Gain insight into every division and program in the FBI
- Produce reports and prepare briefings for FBI senior executives
- Travel to field offices to conduct training or collect data
- Expand skill sets in project management, data collection and analysis, business communication, and presentation creation and deliverance
- Make an impact on the efficiency and effectiveness of FBI business operations



Resource Planning Office

Federal Bureau of Investigation

RPO

Enterprise Processes



Data Informed Analysis



Innovation

UNIT DESCRIPTIONS

AMAU

Administrative Management & Analysis Unit

AMAU provides exceptional customer service and manages administrative functions (e.g., budget, personnel, procurement, property, training, and travel) for the executive offices of the Director better enabling them to meet their missions.

BPMU

Business Process Management Unit

BPMU aims to continuously improve the FBI's efficiency through business process re-engineering, standardization, transparency, and automation.

IAG

Internal Advisory Group

IAG provides FBI senior management with analyses and recommendations to resolve cross-divisional, complex management issues and manages the process by which senior executives review the progress of the FBI's top strategic initiatives.

IPO

Internal Policy Office

IPO manages the coordination, review, approval, publication, and promulgation of FBI internal policy and forms.

PMU

Performance Management Unit

PMU manages a growing enterprise warehouse of FBI operational and organizational data, develops reporting products and visualizations to more than 11,000 FBI users, and provides advanced analytics support on key FBI management challenges.

RAU

Resource Analysis Unit

RAU manages the FBI's personnel budget, analyzes compensation and benefits costs, drives strategic resource allocation decisions, and manages projects related to resource allocation.

SPMU

Strategy and Program Management Unit

SPMU facilitates the development and execution of the FBI Strategy at headquarters and operational program strategies in the field.